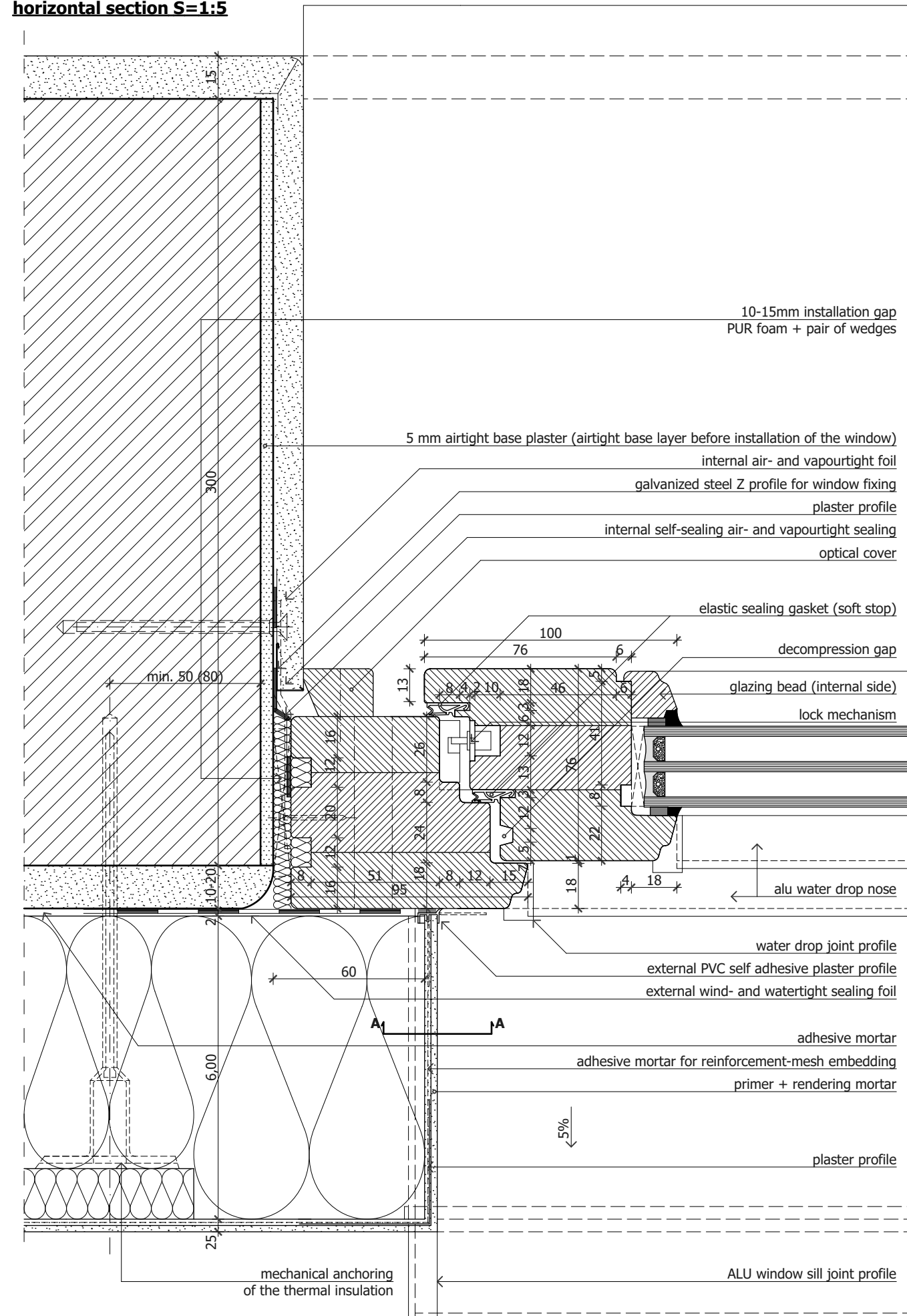
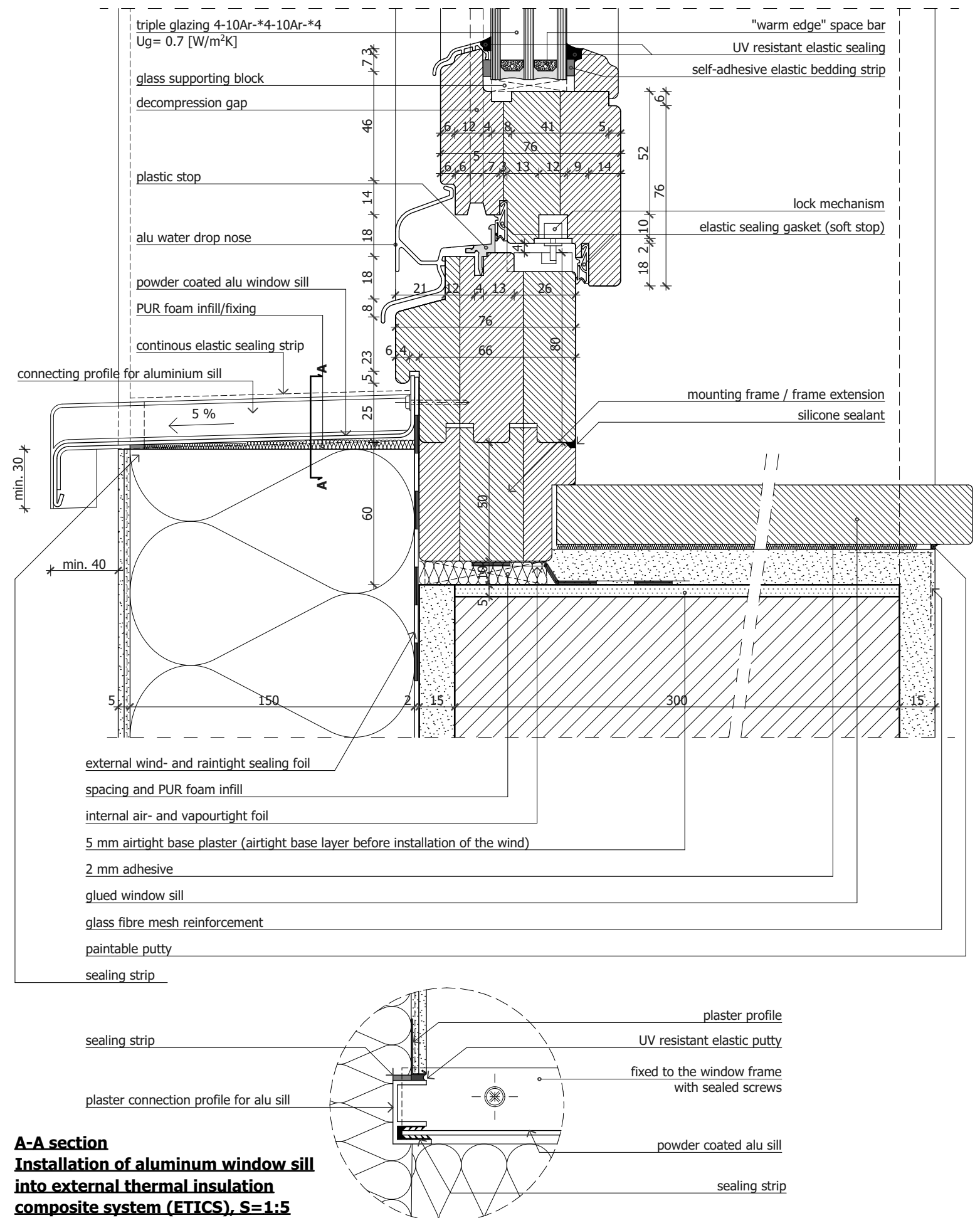


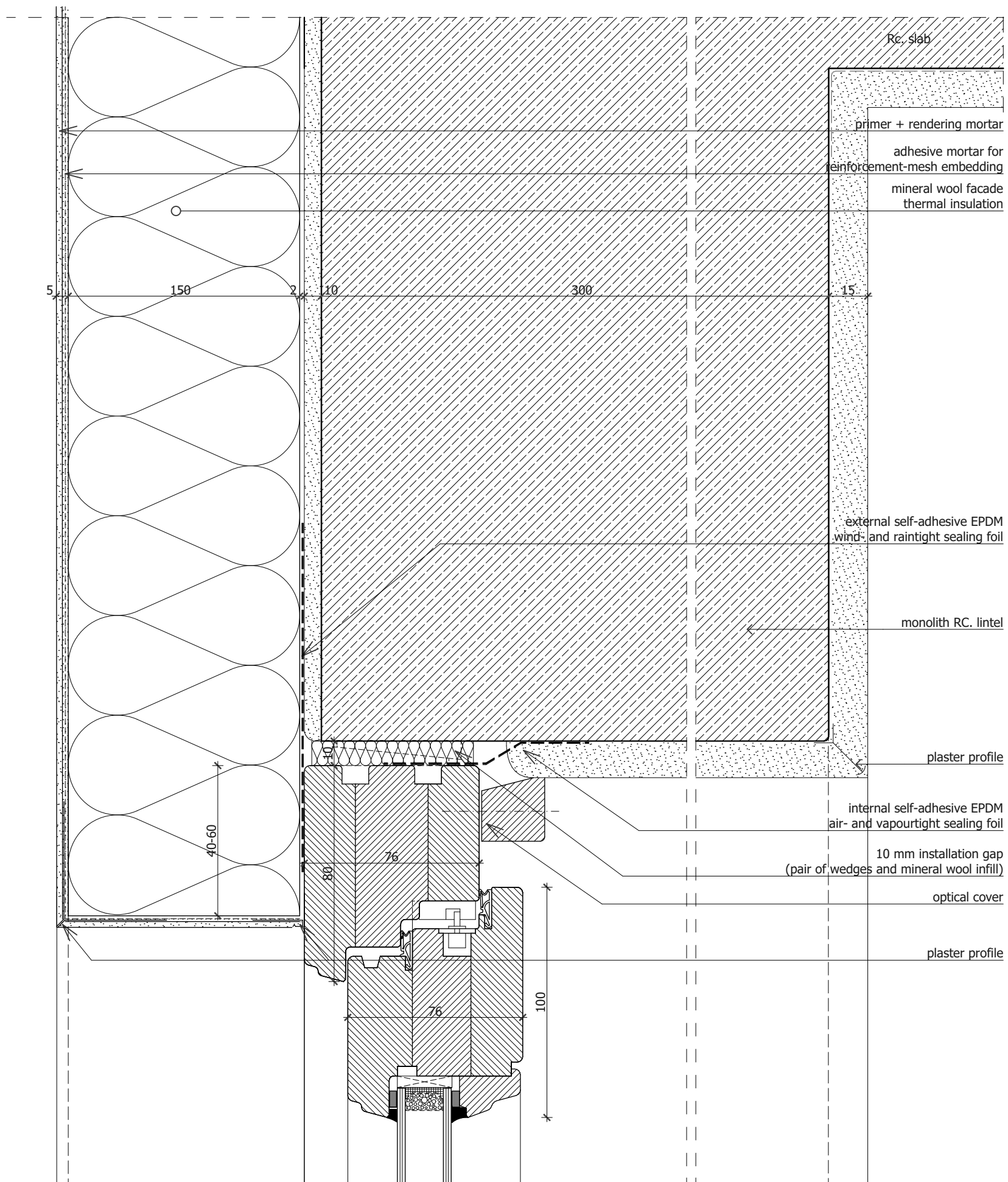
**Installation of up-to-date laminated timber window into a wall with external thermal insulation composite system (ETICS), without shading system, horizontal section S=1:5**



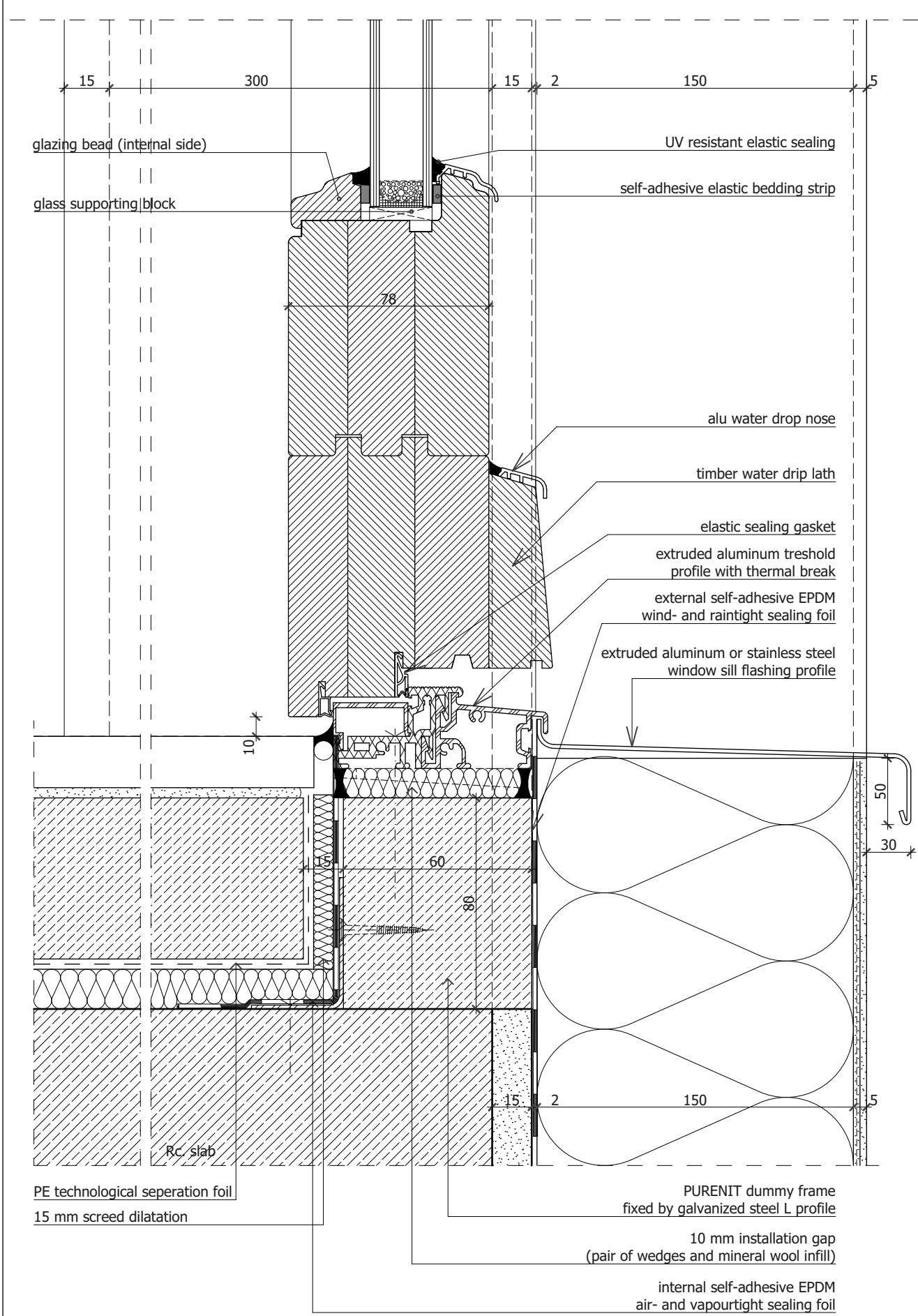
**Installation of up-to-date laminated timber window with frame extension into a wall with external thermal insulation composite system (ETICS), without shading system, widow sill detail S=1:5**



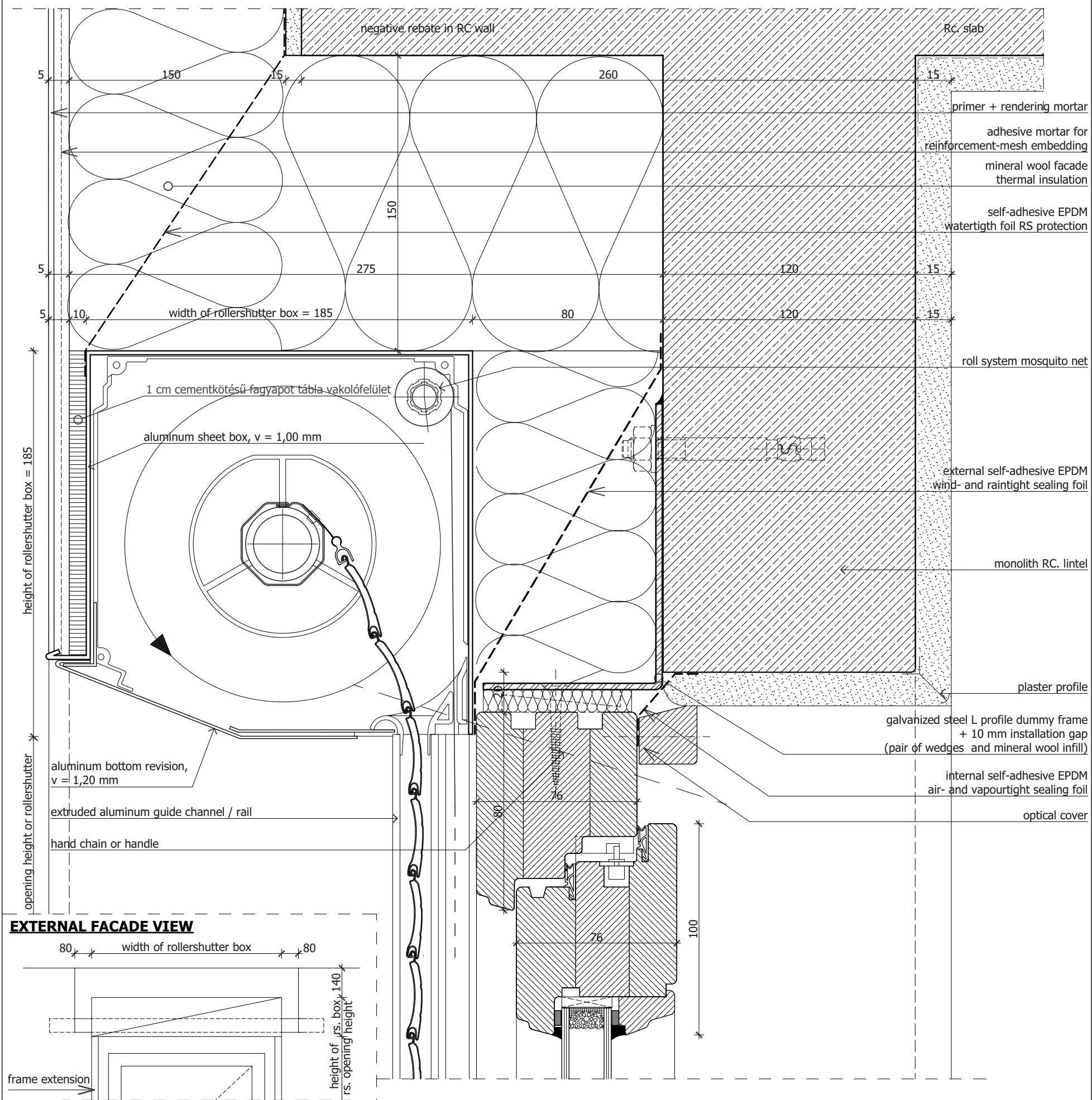
**Installation of up-to-date laminated timber window into a wall with external thermal insulation composite system (ETICS), without shading system, vertical section, S=1:5**



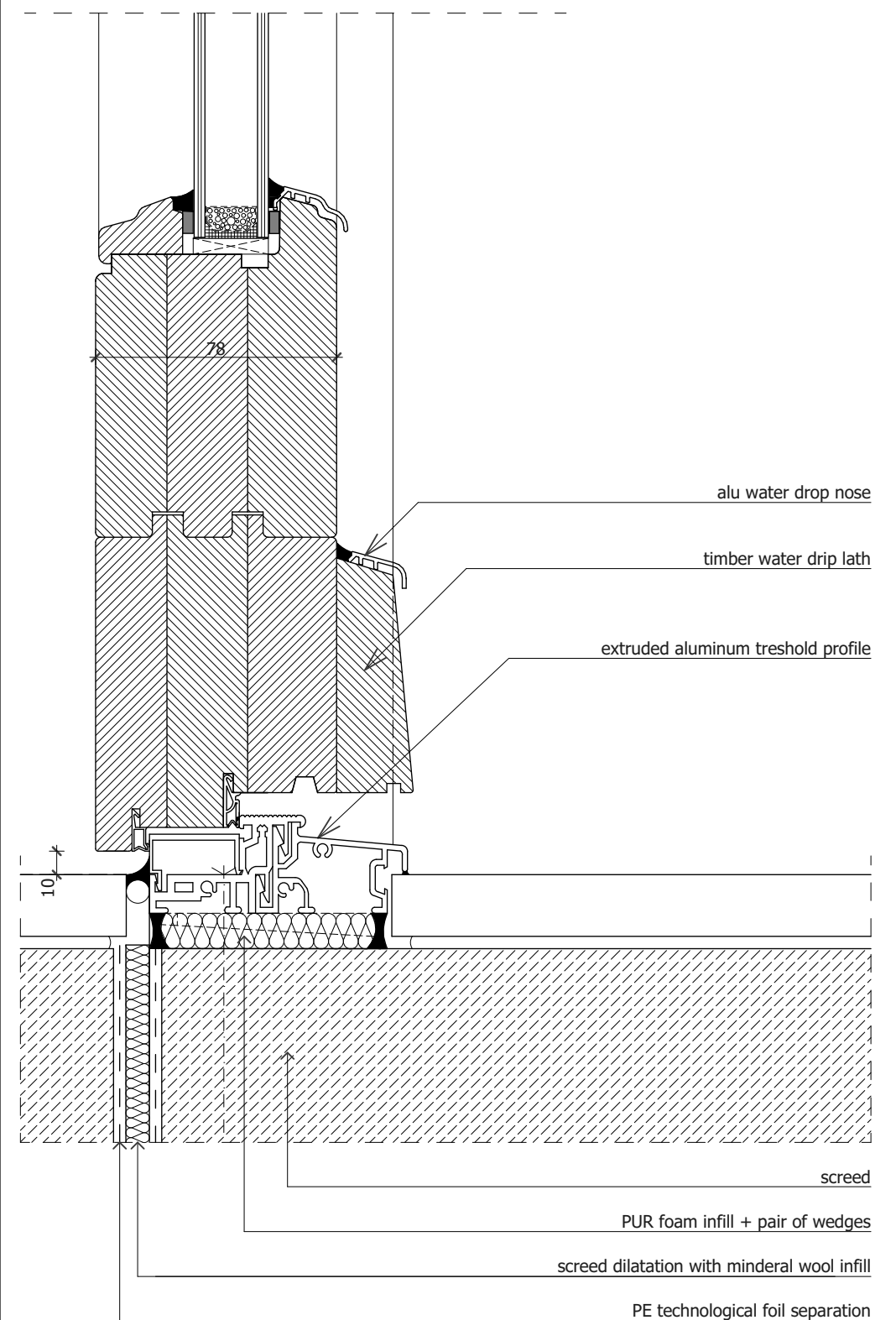
**Installation of an up-to-date laminated timber balcony door, threshold detail, vertical section S=1:5**



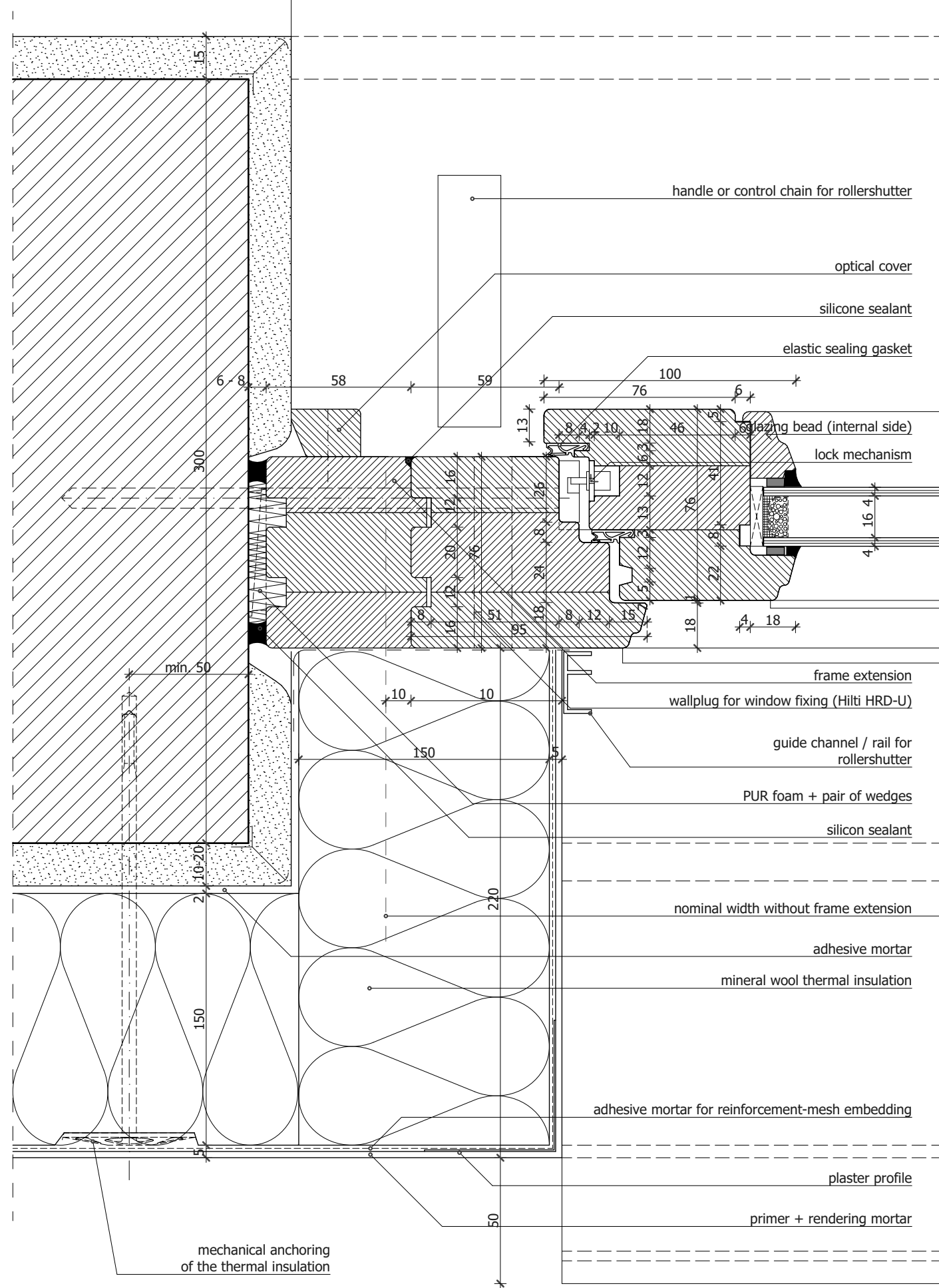
**Installation of up-to-date laminated timber window into a wall with external thermal insulation composite system (ETICS), with hidden rollershutter box, vertical section S=1:5**



**Installation of an up-to-date laminated timber internal entrance door, threshold detail, vertical section S=1:5**



**Installation of up-to-date laminated timber window into a wall with external thermal insulation composite system (ETICS), with hidden rollershutter box and frame extension, horizontal section S=1:5**



**Installation of up-to-date laminated timber window into a wall with external thermal insulation composite system (ETICS), with hidden rollershutter box and frame extension, vertical section S=1:5**

