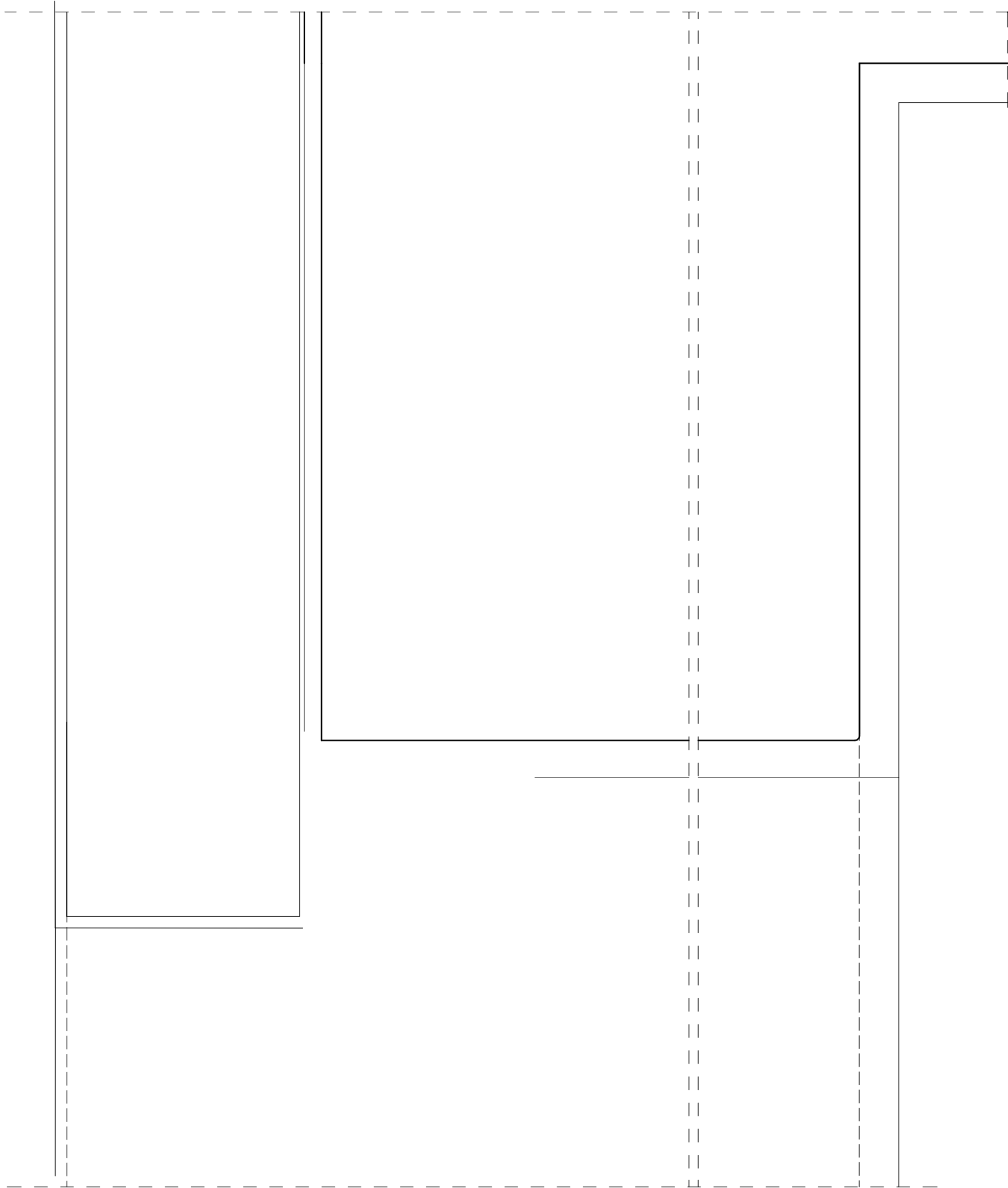
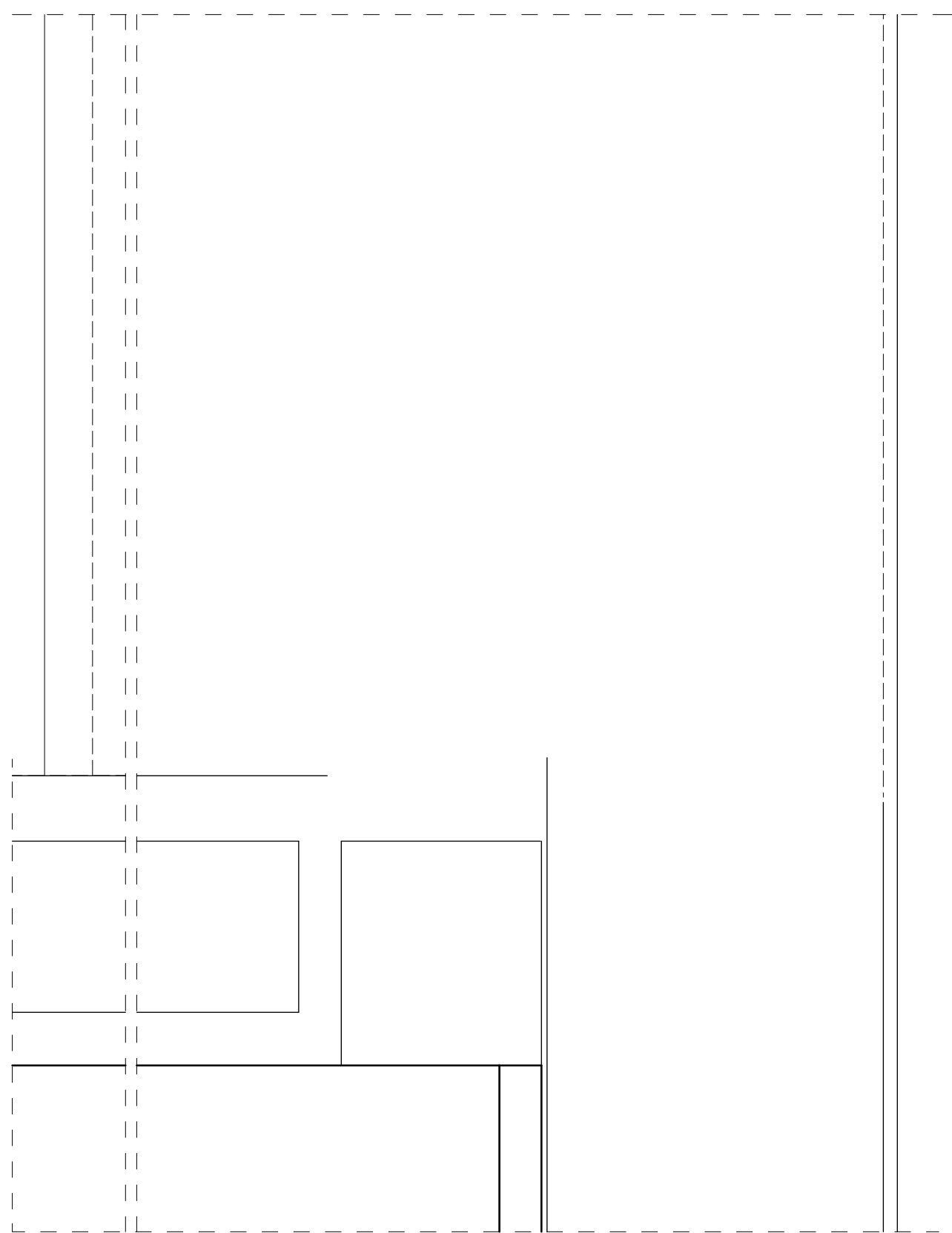


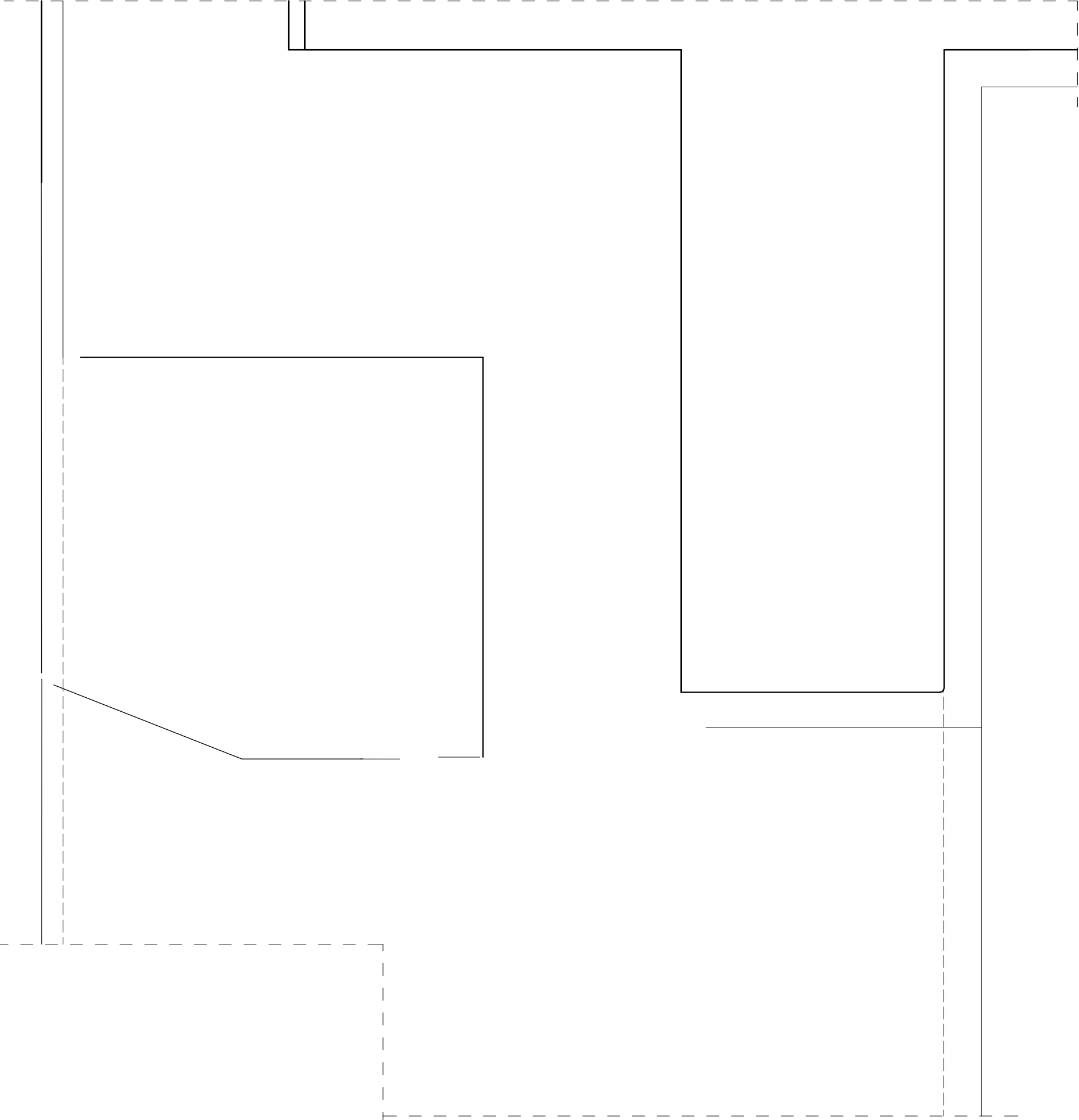
Installation of up-to-date laminated timber window into a wall with external thermal insulation composite system (ETICS), without shading system, vertical section, S=1:5



Installation of an up-to-date laminated timber balcony door, treshold detail, vertical section S=1:5



Installation of up-to-date laminated timber window into a wall with external thermal insulation composite system (ETICS), with hidden rollershutter box, vertical section S=1:5



Installation of an up-to-date laminated timber internal entrance door, treshold detail, vertical section S=1:5



Installation of up-to-date laminated timber window into a wall with external thermal insulation composite system (ETICS), with hidden rollershutter box and frame extension, horizontal section S=1:5

Installation of up-to-date laminated timber window into a wall with external thermal insulation composite system (ETICS), with hidden rollershutter box and frame extension, vertical section S=1:5

