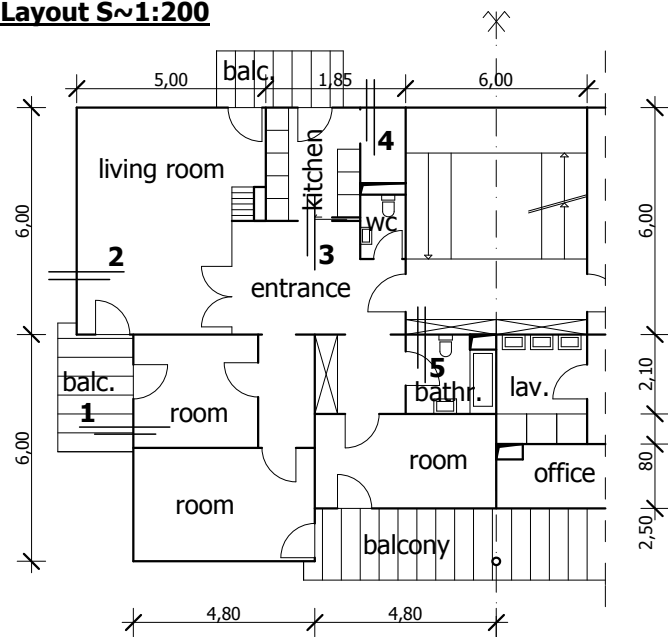


Layout S~1:200



R1. layers, balcony:

- 7 mm ceramic tiles, frost proof with flexible adhesive
- 3 mm flexible, cement-based liquid-applied waterproofing
- 55-75 mm concrete screed
- 1 ly. PE foil, with min. 10cm overlap
- 70 mm EPS foam
- 20 cm in-situ made reinforced concrete slab

R2. layers, room:

- 22 mm parquet with adhesive
- 5 mm self-levelling smoothing compound
- 65 mm concrete screed (reinforced)
- 1 ly. PE foil
- 25 mm mineral wool (floating layer)
- 50 mm EPS foam (layer for installation)
- 20 cm in-situ made reinforced concrete slab

R3. layers, kitchen:

- 7 mm ceramic tiles with adhesive
- 5 mm self-levelling smoothing compound (mortar)
- 80 mm concrete screed (reinforced)
- 1 ly. PE foil
- 25 mm mineral wool (floating layer)
- 50 mm EPS foam (layer for installation)
- 20 cm in-situ made reinforced concrete slab

R4. layers, bathroom:

- 7 mm ceramic tiles with adhesive
- 3 mm flexible, cement-based liquid waterproofing
- 5-15 mm inclination layer
- 60 mm concrete screed
- 1 ly. PE foil
- 25 mm mineral wool (floating layer)
- 50 mm EPS foam (layer for installation)
- 20 cm in-situ made reinforced concrete slab

FLOOR COVERINGS

The method of desing:

1. The requirements of the residential building, the standards relevant to impact noise protection
2. The acoustic influences of the floor covering
3. Floating floor constructions (parquet, tiles, waterproofing of wet areas)
4. The accessories of the covering (expansion joint, change of the covering)
5. The covering of the stairways (impact noise protection)

Details

S=1:5

EPS foam thermal insulation glued + mechanically fixed

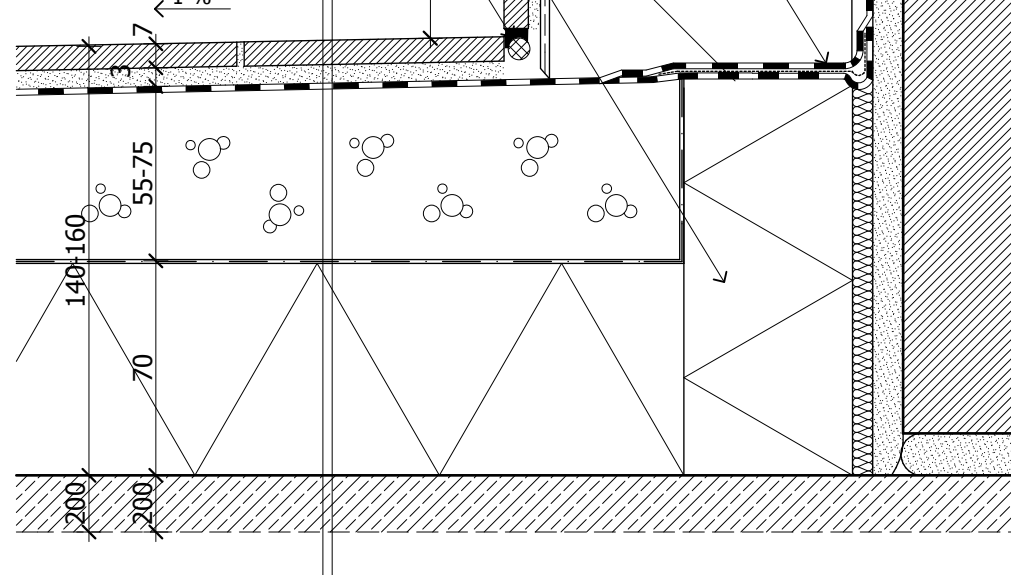
XPS foam thermal insulation glued

cord for joint sealing

PUR/PIR foam thermal insulation next to the connecting wall

two-phase infill: long lasting flexible silicone and PE. foam string (supporting)

1 %

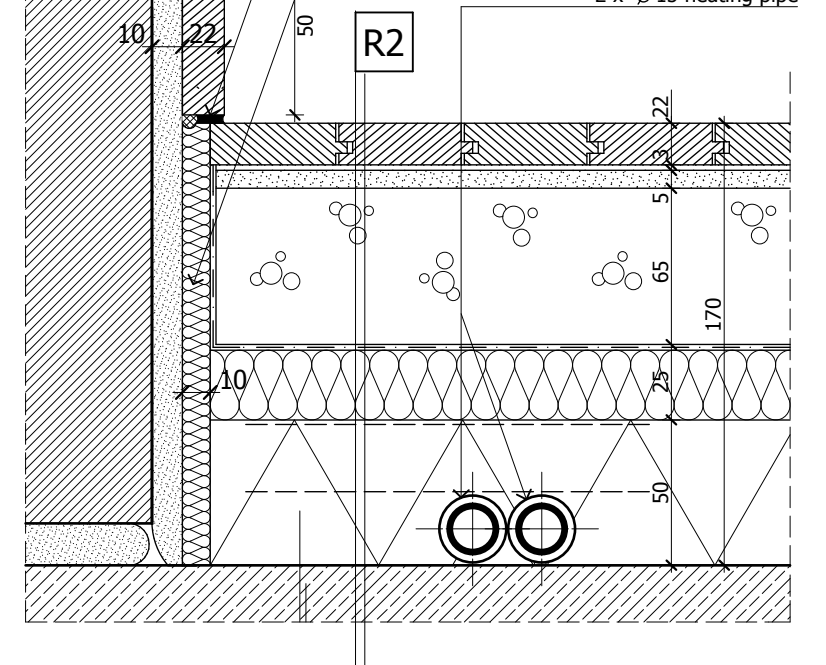


2.

two-phase infill: long lasting flexible silicone and PE. foam string (supporting)

expansion edge joint infill: 1 cm poliethylene foam

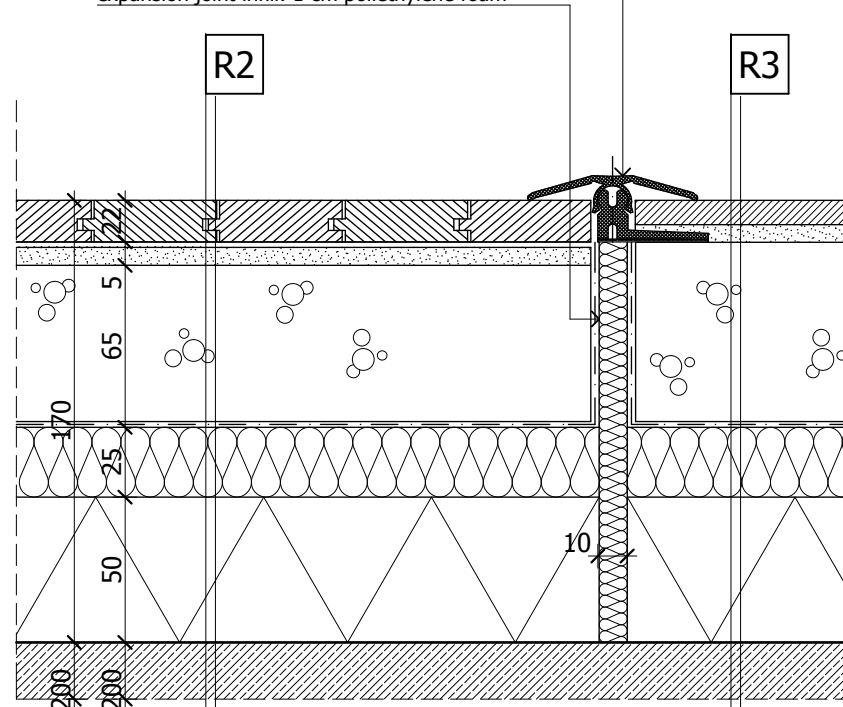
2 x Ø 15 heating pipe



3.

cover strip of powder-coated/anodized aluminium clipped onto the support profile of high-impact plastic (f.e. Alfer Clipstech)

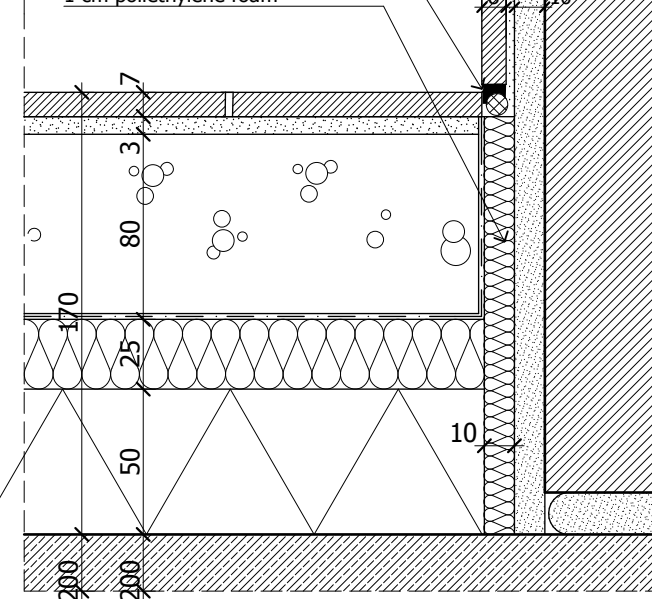
expansion joint infill: 1 cm poliethylene foam



4.

two-phase infill: long lasting flexible silicone and PE. foam string (supporting)

expansion edge joint infill: 1 cm poliethylene foam



5.

two-phase infill: long lasting flexible silicone and PE. foam string (supporting)

2 x Ø 15 heating pipe

