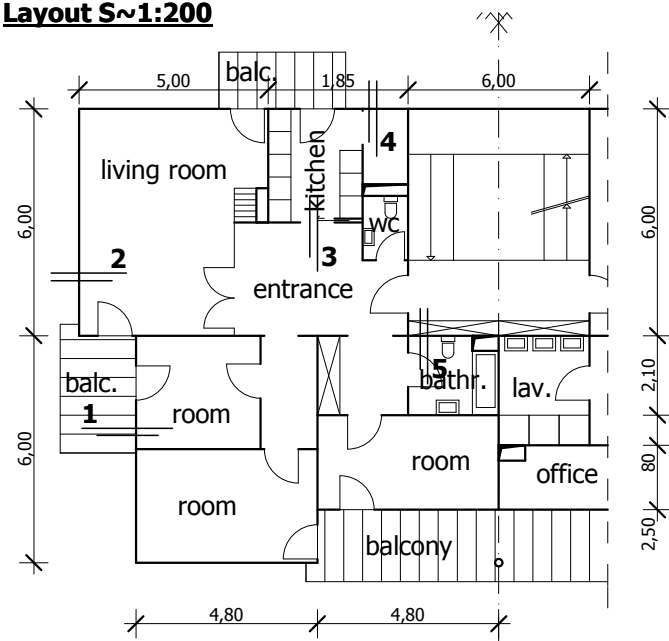


**Layout S~1:200**



**FLOOR COVERINGS**

**The method of desing:**

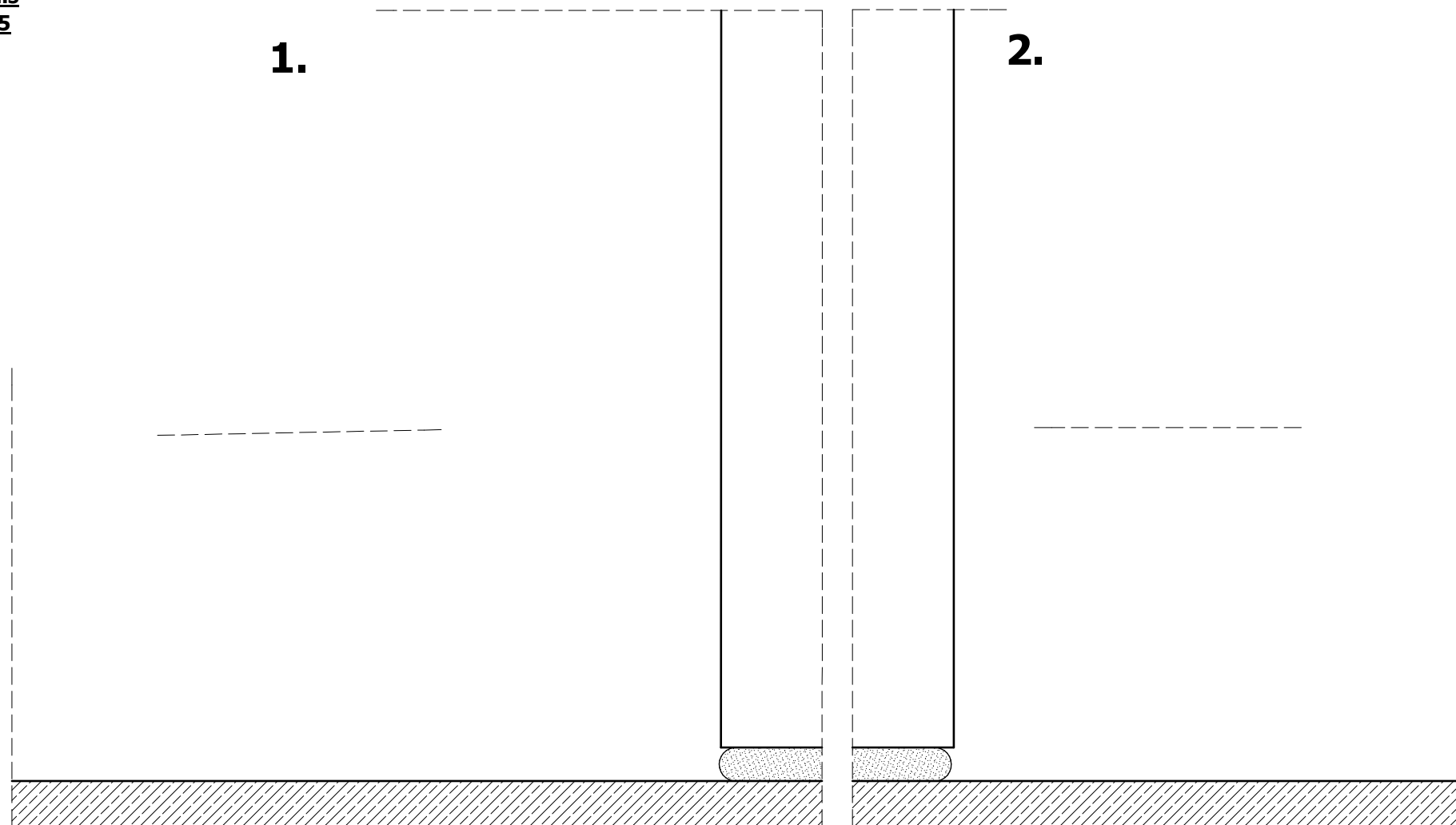
1. The requirements of the residential building, the standards relevant to impact noise protection
2. The acoustic influences of the floor covering
3. Floating floor constructions (parquet, tiles, waterproofing of wet areas)
4. The accessories of the covering (expansion joint, change of the covering)
5. The covering of the stairways (impact noise protection)

**Details**

**S=1:5**

**1.**

**2.**



**R1. layers, balcony:**

**R2. layers, room:**

**3.**

**4.**

**5.**

**R3. layers, kitchen:**

**R4. layers, bathroom:**

