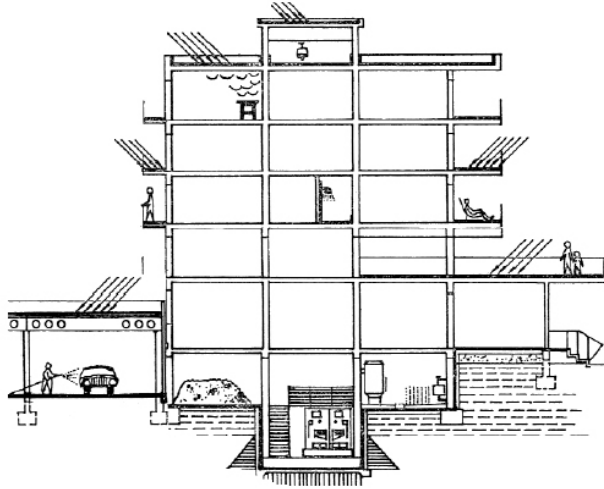


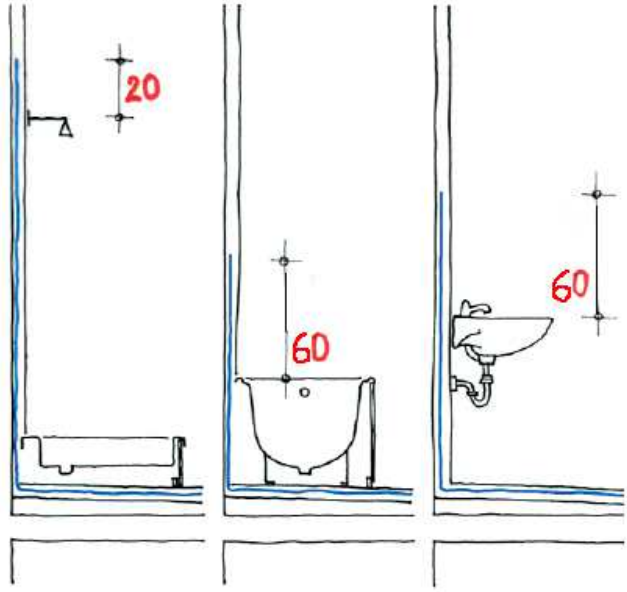
THE WATERPROOFING IN WET AREAS



The wet areas in/around the building

| the levels of performance of the waterproofing in wet rooms | | | |
|--|--|--|---|
| exposure to water (level of risk) | requirements on the protection | | |
| | general | protected area | increased protection |
| moderate (low) | watertight covering (with waterproof joints) | watertight covering + liquid applied waterproofing | waterproofing membrane |
| average (medium) | watertight covering + liquid applied waterproofing | waterproofing membrane | double waterproofing (liquid + membrane) |
| increased (high) | waterproofing membrane | double waterproofing (liquid + membrane) | double waterproofing (liquid + membrane) |

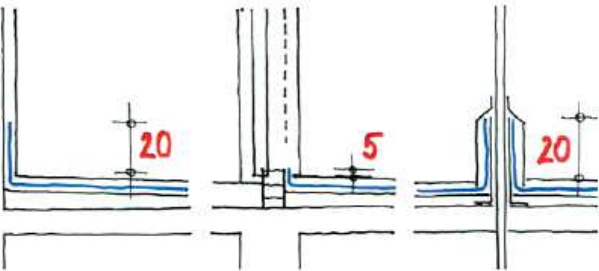
The waterproofing in the wet areas:



shower

bath

basin.



base area

treshold

pipe penetration.